



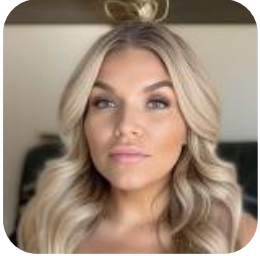
**Effectively Onboarding Providers Through Data  
Quality Analysis, Ensuring Interoperability Readiness**

**Chloe Watts, STChealth  
Arjeane Thompson, Louisiana Department of Health**



# Our Team

STChealth and LINKS



**Chloe Watts**

Senior Health IT Operations Specialist



**Teresa Salama**

Senior Manager of Professional Services



**Hrvojka Vlasic**

Health IT Operations Manager

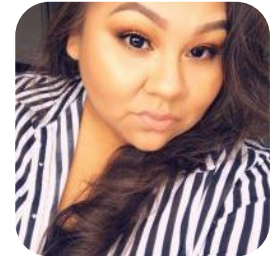
**Arjeane Thompson**

LINKS Data Quality Evaluator



**Rachel York**

LINKS IIS Program Manager



**Scarlett McGovern &**

**Alex Chan**

LINKS Interoperability Program Monitors



# Welcome



IIS data quality is the degree to which data sent to or stored in an IIS meet current standards, support clinical decision-making needs, and can be used to answer key public health questions with high confidence. It also relates to how accurately the data within the IIS reflect vaccination events.



*AIRA*



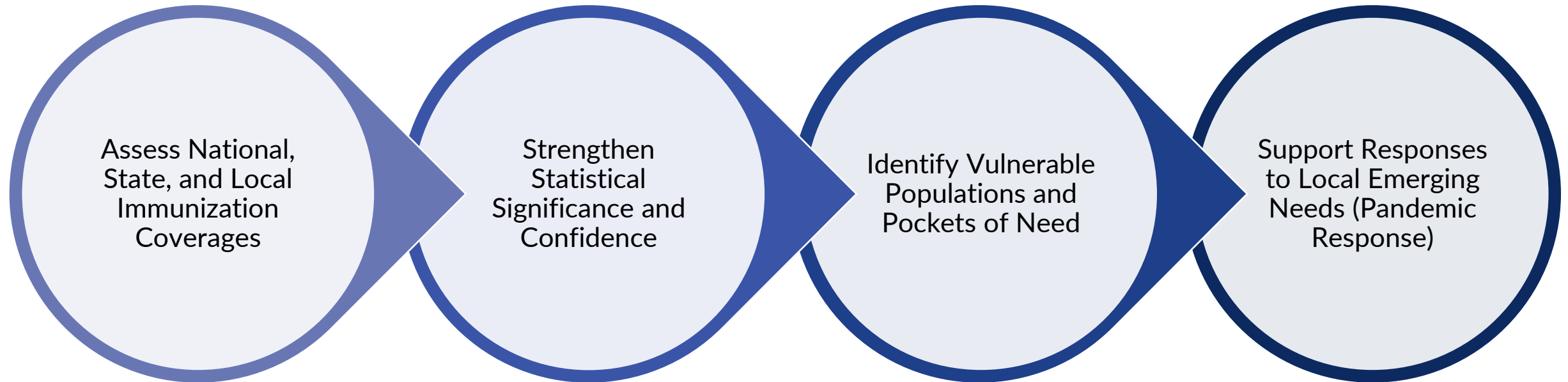
LOUISIANA  
DEPARTMENT OF HEALTH

# Blueprint of Data Quality in an IIS

Completeness, Accuracy, and Timeliness are the two biggest components when it pertains to Data Quality in the Immunization world.



# Downstream Impact of Data Quality



# The Challenges

Every jurisdiction will face unique challenges specific to its area and providers.

01

**Staffing, Time, and Money**

02

**Resistance to Change**

03

**HL7 Standardization**



# The Solutions

A complete and precise onboarding process can alleviate those challenges and bring forth 3 major goals:

01

**Reduce Wait List Times**

02

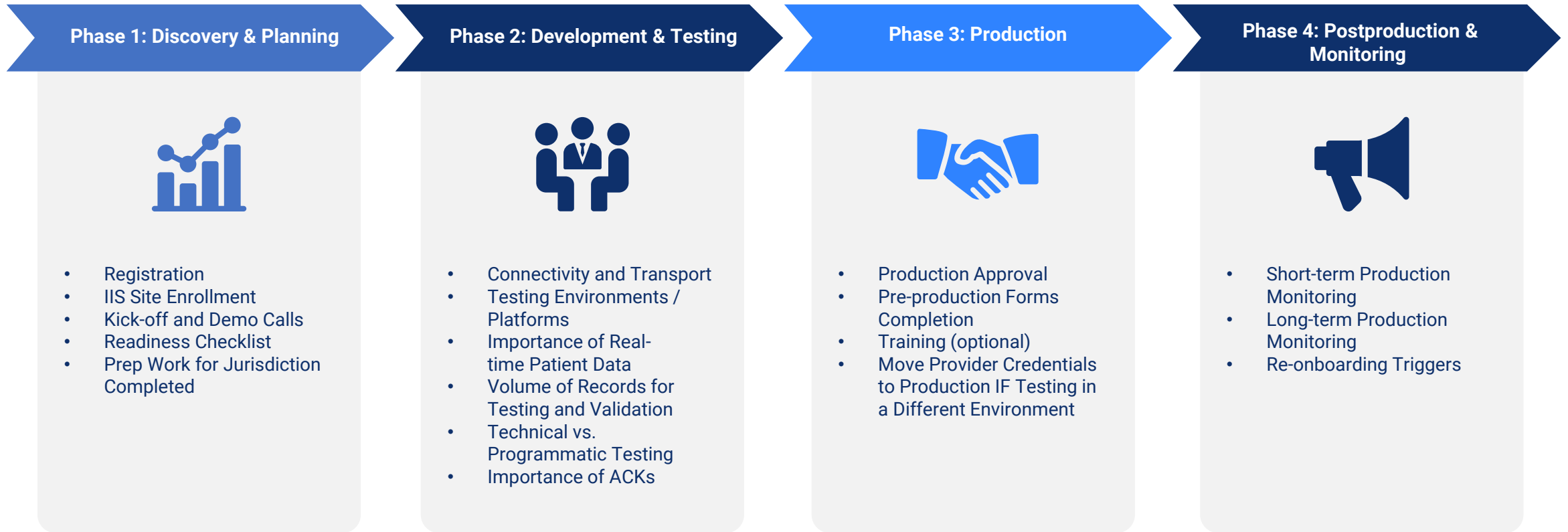
**Increase Standardization**

03

**Meet Data Quality Goals**



# Phases of Onboarding





# Onboarding

Onboarding is a term used to describe the process and activities necessary to establish an electronic interface between an immunization provider's electronic health record (EHR) system and a jurisdiction's immunization information system (IIS).

01

Readiness Checklists & Up-To-Date  
HL7 Spec Guides

02

Dose Level Accountability

03

Kickoff and Demo call

04

Consistent Communication

05

Project Tracking (identify best  
resource)

06

Ongoing Training, Education, and  
Post Production Data Monitoring



# NOW WHAT?



# Resources

- AIRA Onboarding Shared services - <https://www.immregistries.org/onboarding-templates>
- AIRA Onboarding Consensus-based recommendations - [https://repository.immregistries.org/files/resources/5c377a4b2a490/aira\\_onboarding\\_recommendations\\_final\\_updated.pdf](https://repository.immregistries.org/files/resources/5c377a4b2a490/aira_onboarding_recommendations_final_updated.pdf)
- AIRA Data Quality resources - <https://repository.immregistries.org/resource/data-quality-assurance-in-immunization-information-systems/>
- CDC Blueprint to Data Quality and IIS information - <https://www.cdc.gov/vaccines/programs/iis/about.html>
- CDC IIS Technical Guidance guides - <https://www.cdc.gov/vaccines/programs/iis/technical-guidance/index.html>
- CDC Meaningful Use implementation and guidance - <https://www.cdc.gov/vaccines/programs/iis/meaningful-use/index.html>
- CDC Immunization Information Systems Annual Report (ISAR) - <https://www.cdc.gov/vaccines/programs/iis/annual-report-iisar/index.html>



# CONTACT US

Vaccine intelligence to monitor, manage, and mobilize data for a healthier future.



Chloe\_watts@stchome.com



480-745-8500



www.stchealth.com



411 South 1st Street,  
Phoenix, Arizona 85004



# CONTACT US



Arjeane.Thompson@la.gov



504-568-2600



<https://ldh.la.gov/>



1450 Poydras Street, Suite  
1938  
New Orleans, LA 70112





**Thank you!**

